

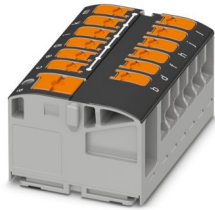
PTVFIX 6/12X2,5 BK - Distribution block



1019612

<https://www.phoenixcontact.com/us/products/1019612>

Please be informed that the data shown in this PDF document is generated from our online catalog. Please find the complete data in the user documentation. Our general terms of use for downloads are valid.



Distribution block, nom. voltage: 450 V, nominal current: 24 A, number of connections: 13, number of positions: 1, connection method: Push-in connection, Load contact, Rated cross section: 2.5 mm², cross section: 0.14 mm² - 4 mm², Line contact, Rated cross section: 6 mm², cross section: 0.5 mm² - 10 mm², mounting type: for snapping onto a DIN rail adapter, Direct mounting with flange, Free-hanging, color: black

Your advantages

- Flexible use, thanks to DIN rail mounting, direct mounting or adhesive mounting
- Clear wiring, thanks to eleven different color variants
- Time-saving conductor connection, thanks to tool-free Push-in direct connection technology
- Time savings of up to 80 %, thanks to ready-to-mount blocks without manual bridging
- Space savings of up to 50 % on the DIN rail, thanks to transverse mounting

Commercial data

| | |
|--------------------------------------|---------------|
| Item number | 1019612 |
| Packing unit | 10 pc |
| Minimum order quantity | 10 pc |
| Sales key | BE09 |
| Product key | BEA223 |
| GTIN | 4055626506937 |
| Weight per piece (including packing) | 26.42 g |
| Weight per piece (excluding packing) | 23.143 g |
| Customs tariff number | 85369010 |
| Country of origin | PL |

PTVFIX 6/12X2,5 BK - Distribution block



1019612

<https://www.phoenixcontact.com/us/products/1019612>

Technical data

Product properties

| | |
|-----------------------|----------------------------|
| Product type | Distributor terminal block |
| Number of positions | 1 |
| Number of connections | 13 |
| Number of rows | 1 |

Data management status

| | |
|------------------|----|
| Article revision | 02 |
|------------------|----|

Insulation characteristics

| | |
|----------------------|-----|
| Overvoltage category | III |
| Degree of pollution | 3 |

Electrical properties

| | |
|---|--------|
| Rated surge voltage | 8 kV |
| Maximum power dissipation for nominal condition | 0.77 W |

Connection data

| | |
|---------------------------------|---------------------|
| Service Entrance | yes |
| Number of connections per level | 13 |
| Nominal cross section | 2.5 mm ² |

Load contact

| | |
|---|--|
| Stripping length | 8 mm ... 10 mm |
| Internal cylindrical gage | A3 |
| | B3 |
| Connection in acc. with standard | IEC 60998-2-2 |
| Conductor cross section rigid | 0.14 mm ² ... 4 mm ² |
| Cross section AWG | 26 ... 12 (converted acc. to IEC) |
| Conductor cross section flexible | 0.14 mm ² ... 2.5 mm ² |
| Conductor cross section, flexible [AWG] | 26 ... 14 (converted acc. to IEC) |
| Conductor cross-section flexible (ferrule without plastic sleeve) | 0.14 mm ² ... 2.5 mm ² |
| Flexible conductor cross section (ferrule with plastic sleeve) | 0.14 mm ² ... 2.5 mm ² |
| Conductor cross-section flexible (2 conductors with the same cross-section, with TWIN ferrule and plastic sleeve) | 0.5 mm ² |
| Nominal current | 24 A |
| Maximum load current | 32 A (with 4 mm ² conductor cross section) |
| Maximum total current | 57 A (with 10 mm ² conductor cross section) |
| Nominal voltage | 450 V |
| Nominal cross section | 2.5 mm ² |

Line contact

| | |
|------------------|-----------------|
| Stripping length | 10 mm ... 12 mm |
|------------------|-----------------|

PTVFIX 6/12X2,5 BK - Distribution block



1019612

<https://www.phoenixcontact.com/us/products/1019612>

| | |
|---|--|
| Internal cylindrical gage | A5 |
| | B4 |
| Conductor cross section rigid | 0.5 mm ² ... 10 mm ² |
| Cross section AWG | 20 ... 8 (converted acc. to IEC) |
| Conductor cross section flexible | 0.5 mm ² ... 6 mm ² |
| Conductor cross section, flexible [AWG] | 20 ... 10 (converted acc. to IEC) |
| Conductor cross-section flexible (ferrule without plastic sleeve) | 0.5 mm ² ... 6 mm ² |
| Flexible conductor cross section (ferrule with plastic sleeve) | 0.5 mm ² ... 6 mm ² |
| Conductor cross-section flexible (2 conductors with the same cross-section, with TWIN ferrule and plastic sleeve) | 0.5 mm ² ... 1.5 mm ² |
| Nominal current | 41 A (with 6 mm ² conductor cross section) |
| Maximum load current | 57 A (with 10 mm ² conductor cross section) |
| Nominal cross section | 6 mm ² |

Load contact Connection cross sections directly pluggable

| | |
|---|--|
| Conductor cross section rigid | 0.34 mm ² ... 4 mm ² |
| Conductor cross section, rigid [AWG] | 22 ... 18 (converted acc. to IEC) |
| Conductor cross-section flexible (ferrule without plastic sleeve) | 0.5 mm ² ... 2.5 mm ² |
| Flexible conductor cross section (ferrule with plastic sleeve) | 0.34 mm ² ... 2.5 mm ² |

Line contact Connection cross sections directly pluggable

| | |
|---|--|
| Conductor cross section rigid | 1 mm ² ... 10 mm ² |
| Conductor cross section, rigid [AWG] | 18 ... 8 (converted acc. to IEC) |
| Conductor cross-section flexible (ferrule without plastic sleeve) | 1 mm ² ... 6 mm ² |
| Flexible conductor cross section (ferrule with plastic sleeve) | 1 mm ² ... 6 mm ² |

Dimensions

| | |
|--------|---------|
| Width | 41.5 mm |
| Height | 28.6 mm |
| Depth | 21.7 mm |

Material specifications

| | |
|---|------------------|
| Color | black (RAL 9005) |
| Flammability rating according to UL 94 | V0 |
| Insulating material group | I |
| Insulating material | PA |
| Static insulating material application in cold | -60 °C |
| Temperature index of insulation material (DIN EN 60216-1 (VDE 0304-21)) | 125 °C |
| Relative insulation material temperature index (Elec., UL 746 B) | 130 °C |

Mechanical properties

Mechanical data

| | |
|-----------------|----|
| Open side panel | No |
|-----------------|----|

PTVFIX 6/12X2,5 BK - Distribution block



1019612

<https://www.phoenixcontact.com/us/products/1019612>

Environmental and real-life conditions

Ambient conditions

| | |
|--|--|
| Ambient temperature (operation) | -60 °C ... 110 °C (Operating temperature range incl. self-heating; for max. short-term operating temperature, see RTI Elec.) |
| Ambient temperature (storage/transport) | -25 °C ... 60 °C (for a short time, no longer than 24 h, -60°C to +70°C) |
| Ambient temperature (assembly) | -5 °C ... 70 °C |
| Ambient temperature (actuation) | -5 °C ... 70 °C |
| Permissible humidity (operation) | 20 % ... 90 % |
| Permissible humidity (storage/transport) | 30 % ... 70 % |

Standards and regulations

| | |
|----------------------------------|---------------|
| Connection in acc. with standard | IEC 60998-2-2 |
|----------------------------------|---------------|

Mounting

| | |
|---------------|--------------------------------------|
| Mounting type | for snapping onto a DIN rail adapter |
| | Direct mounting with flange |
| | Free-hanging |

PTVFIX 6/12X2,5 BK - Distribution block

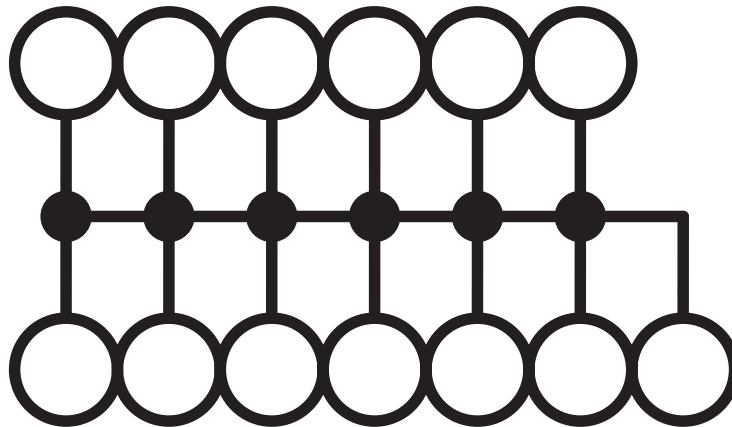


1019612

<https://www.phoenixcontact.com/us/products/1019612>

Drawings

Circuit diagram



PTVFIX 6/12X2,5 BK - Distribution block



1019612

<https://www.phoenixcontact.com/us/products/1019612>

Approvals

To download certificates, visit the product detail page: <https://www.phoenixcontact.com/us/products/1019612>



cULus Recognized

Approval ID: E60425



CSA

Approval ID: 13631

DNV

Approval ID: TAE00004R4

PTVFIX 6/12X2,5 BK - Distribution block



1019612

<https://www.phoenixcontact.com/us/products/1019612>

Classifications

ECLASS

| | |
|-------------|----------|
| ECLASS-11.0 | 27141120 |
| ECLASS-13.0 | 27250118 |

ETIM

| | |
|----------|----------|
| ETIM 9.0 | EC000897 |
|----------|----------|

UNSPSC

| | |
|-------------|----------|
| UNSPSC 21.0 | 39121400 |
|-------------|----------|

PTVFIX 6/12X2,5 BK - Distribution block



1019612

<https://www.phoenixcontact.com/us/products/1019612>

Environmental product compliance

EU RoHS

| | |
|---|--------------------|
| Fulfills EU RoHS substance requirements | Yes, No exemptions |
|---|--------------------|

China RoHS

| | |
|--|--|
| Environment friendly use period (EFUP) | EFUP-E |
| | No hazardous substances above the limits |

EU REACH SVHC

| | |
|-------------------------------------|----------------------------|
| REACH candidate substance (CAS No.) | No substance above 0.1 wt% |
|-------------------------------------|----------------------------|

Phoenix Contact 2024 © - all rights reserved
<https://www.phoenixcontact.com>

Phoenix Contact USA
586 Fulling Mill Road
Middletown, PA 17057, United States
(+717) 944-1300
info@phoenixcon.com