

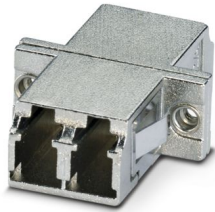
# FOC-ADAPTER:LCD/LCD-MM-ME - Fiber optic coupling



1208069

<https://www.phoenixcontact.com/us/products/1208069>

Please be informed that the data shown in this PDF document is generated from our online catalog. Please find the complete data in the user documentation. Our general terms of use for downloads are valid.



Fiber optic coupling, degree of protection: IP20, number of positions: 2, material: Metal, connection method: Coupling, cable outlet: straight, color: silver/matt, Ethernet

## Your advantages

- High reliability with comprehensive quality assurance measures
- Optimized precision (stability) with the use of ceramic sleeves
- Versatile range of applications with an extended temperature range and various mounting options
- Suitable for use for all multimode classes
- Optimum compatibility with the FDX20 series splice boxes
- Future-proof, thanks to RoHS 2 conformity

## Commercial data

Item number	1208069
Packing unit	6 pc
Minimum order quantity	6 pc
Sales key	AB16
Product key	ABNIDA
GTIN	4063151275853
Weight per piece (including packing)	11.25 g
Weight per piece (excluding packing)	11.25 g
Customs tariff number	85367000
Country of origin	CN

# FOC-ADAPTER:LCD/LCD-MM-ME - Fiber optic coupling



1208069

<https://www.phoenixcontact.com/us/products/1208069>

## Technical data

### Product properties

Product type	Female insert
Type	LC
Sensor type	Ethernet
Number of positions	2
Connection profile	LC
Number of slots	2
Cable outlet	straight

### Data management status

Article revision	00
------------------	----

### Insulation characteristics

Overvoltage category	III
Degree of pollution	2

### Electrical properties

Rated surge voltage	0.8 kV
Attenuation	≤ 0.2 dB
Nominal current $I_N$	0.5 A
Transmission medium	FO

### Connection data

#### Connection technology

Connection method	Coupling
-------------------	----------

### Dimensions

Width	22 mm
Height	9.4 mm
Length	19.2 mm

### Mechanical characteristics

Ferrule diameter	1.25 mm
------------------	---------

### Material specifications

Color	silver/matt
Color of the housing part	silver
Flammability rating according to UL 94	V0
Housing material	Metal
Housing surface material	metal-plated
Contact surface material	Gold

### Cable/line

# FOC-ADAPTER:LCD/LCD-MM-ME - Fiber optic coupling



1208069

<https://www.phoenixcontact.com/us/products/1208069>

Cable type	Fiberglass
External sheath, color	silver-colored
Tensile strength short-term/long-term	40 N
Halogen-free	yes
Resistance to oil	yes
Flame resistance	yes

## FO cable

Number of fibers	2
Fiber	50/125 µm
Fiber type	Fiberglass
Attenuation	≤ 0.15 dB

## Mechanical properties

Tensile strength short-term/long-term	40 N
---------------------------------------	------

## Characteristics

Attenuation	≤ 0.2 dB
-------------	----------

## Environmental and real-life conditions

### Ambient conditions

Degree of protection	IP20 IP20
Ambient temperature (operation)	-40 °C ... 75 °C
Ambient temperature (storage/transport)	-55 °C ... 85 °C
Ambient temperature (assembly)	0 °C ... 50 °C
Resistance to UV radiation	yes
Resistance to oil	yes

## Standards and regulations

Flame resistance	yes
Resistance to oil	yes

# FOC-ADAPTER:LCD/LCD-MM-ME - Fiber optic coupling



1208069

<https://www.phoenixcontact.com/us/products/1208069>

## Classifications

### ECLASS

ECLASS-11.0	27440392
ECLASS-13.0	19170116
ECLASS-12.0	27440392

### ETIM

ETIM 9.0	EC000752
----------	----------

### UNSPSC

UNSPSC 21.0	39121400
-------------	----------

# FOC-ADAPTER:LCD/LCD-MM-ME - Fiber optic coupling



1208069

<https://www.phoenixcontact.com/us/products/1208069>

## Environmental product compliance

### EU RoHS

Fulfills EU RoHS substance requirements	Yes, No exemptions
---	--------------------

### China RoHS

Environment friendly use period (EFUP)	EFUP-E
	No hazardous substances above the limits

### EU REACH SVHC

REACH candidate substance (CAS No.)	No substance above 0.1 wt%
-------------------------------------	----------------------------

Phoenix Contact 2024 © - all rights reserved  
<https://www.phoenixcontact.com>

Phoenix Contact USA  
586 Fulling Mill Road  
Middletown, PA 17057, United States  
(+717) 944-1300  
[info@phoenixcon.com](mailto:info@phoenixcon.com)