

THIS DRAWING IS UNPUBLISHED. RELEASED FOR PUBLICATION 20
 © COPYRIGHT 20 BY - ALL RIGHTS RESERVED.

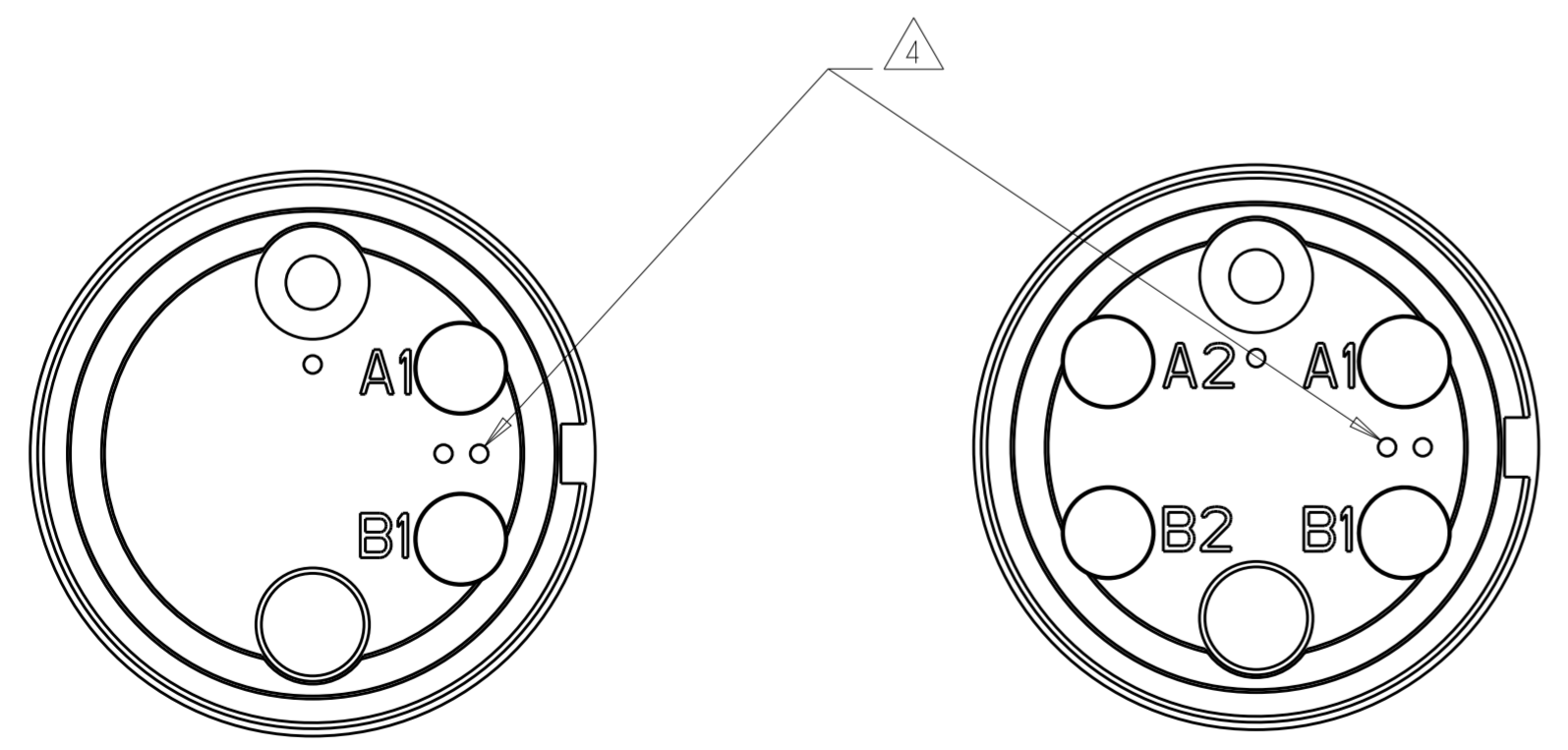
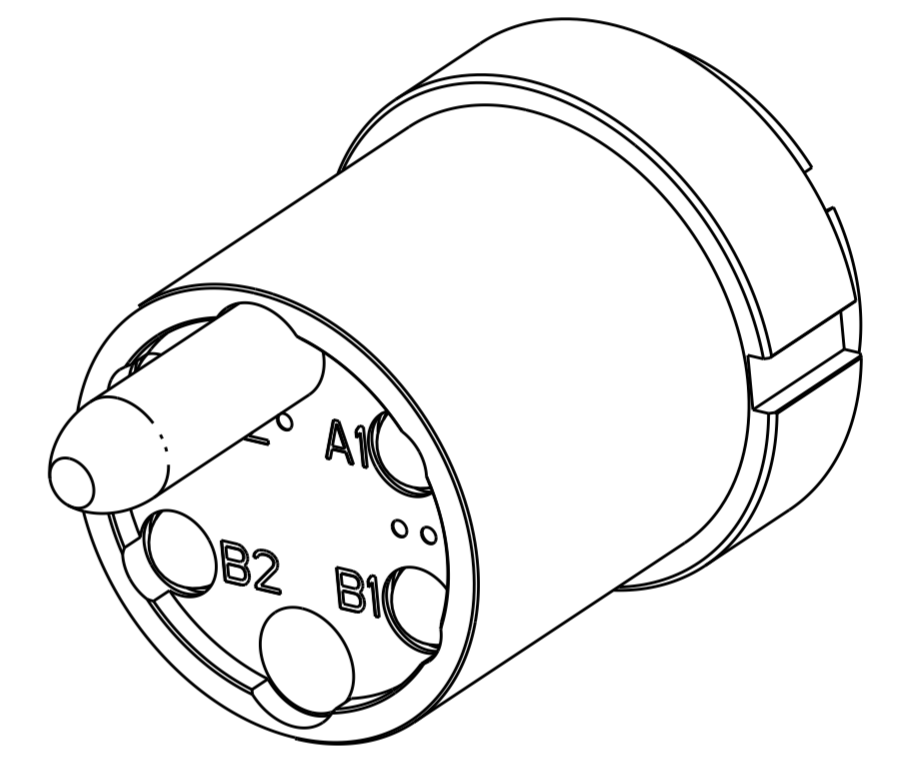
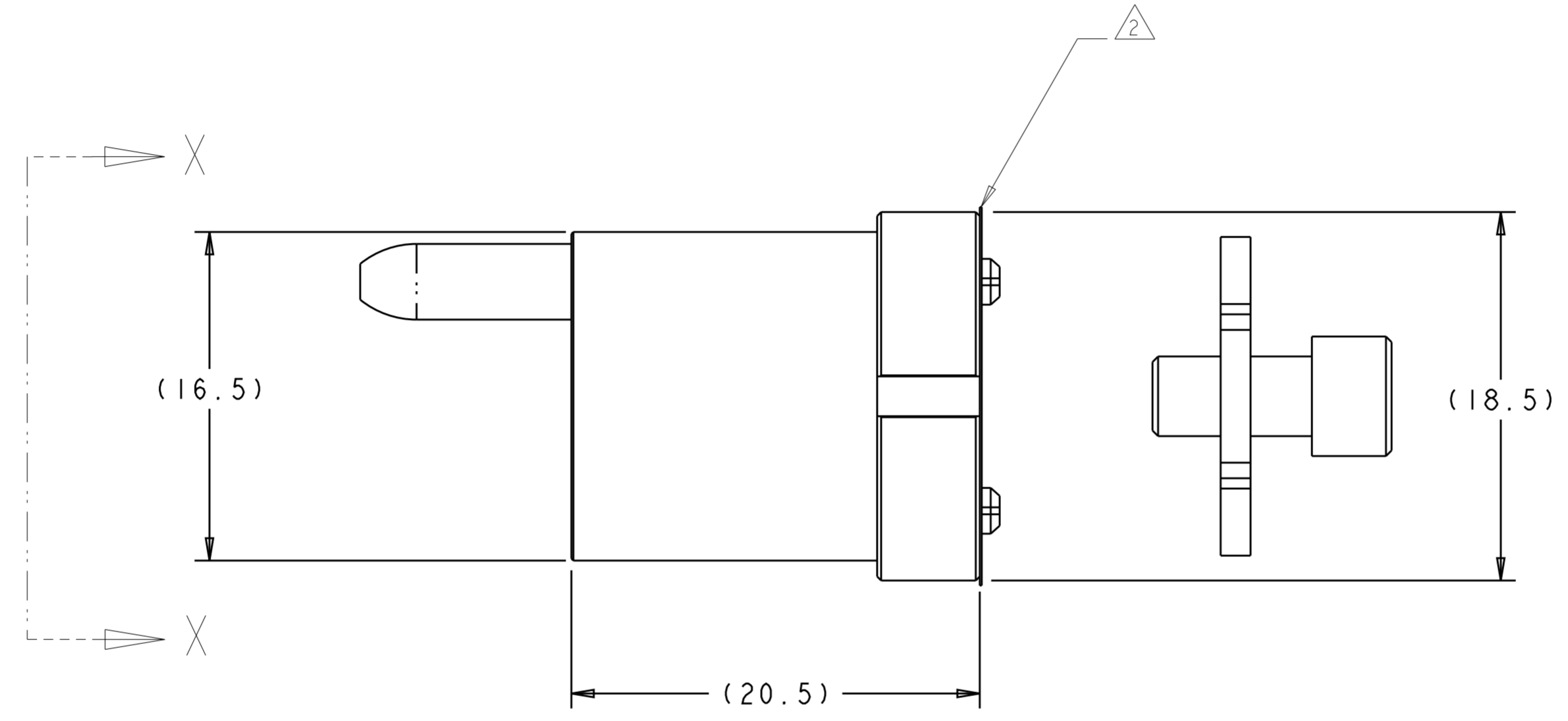
| REVISIONS | | | | | |
|-----------|-----|---------------|-----------|-----|------|
| P | LTR | DESCRIPTION | DATE | DWN | APVD |
| D | I | ECR-12-003450 | 22FEB2012 | KG | DW |
| E | | ECR-16-000809 | 15FEB2016 | KG | DW |
| E | I | ECR-16-010381 | 03NOV2016 | KG | DW |
| F | | ECR-17-014250 | 17OCT2017 | KG | DW |

1. USE WITH FERRULE ASSEMBLY KIT P/N 1515941-2 OR P/N 1588801-1.
 QUANTITY OF 2 REQUIRED FOR 1693001-1. QUANTITY 4 REQUIRED FOR 1693001-2..

2. PROTECTIVE LABEL APPLIED AFTER FINAL CLEAN ROOM TEST TO PREVENT OPTICAL CAVITY CONTAMINATION. REMOVE ONLY WHEN READY TO ASSEMBLE.

3. THIS PRODUCT HAS NOT COMPLETED VALIDATION TESTING.

4. MULTIMODE IDENTIFIER.



1693001-1

1693001-2

VIEW X-X

| 4 CHANNEL, 850/1300nm MM | 1693001-2 |
|--------------------------|-------------|
| 2 CHANNEL, 850/1300nm MM | 1693001-1 |
| DESCRIPTION | PART NUMBER |

| | | | | |
|--|----------|-----------------------------------|--|----------|
| THIS DRAWING IS A CONTROLLED DOCUMENT. | | DWN K. GLATFELTER 19APR2004 | STE TE Connectivity | |
| DIMENSIONS: mm | | CHK D. WERTMAN 04JUN2004 | | |
| TOLERANCES UNLESS OTHERWISE SPECIFIED: | | APVD D. WERTMAN 18JUN2004 | NAME INSERT ASSEMBLY, PRO BEAM SR., | |
| 0 PLC ± | 1 PLC ± | PRODUCT SPEC | - | |
| 2 PLC ± | 3 PLC ± | APPLICATION SPEC | - | |
| 4 PLC ± | ANGLES ± | WEIGHT | - | |
| FINISH | N/A | CUSTOMER DRAWING | SCALE 4:1 | SHEET OF |
| MATERIAL STAINLESS ALLOYS- & NBR | - | SIZE A200779 | DRAWING NO C-1693001 | REV F |