



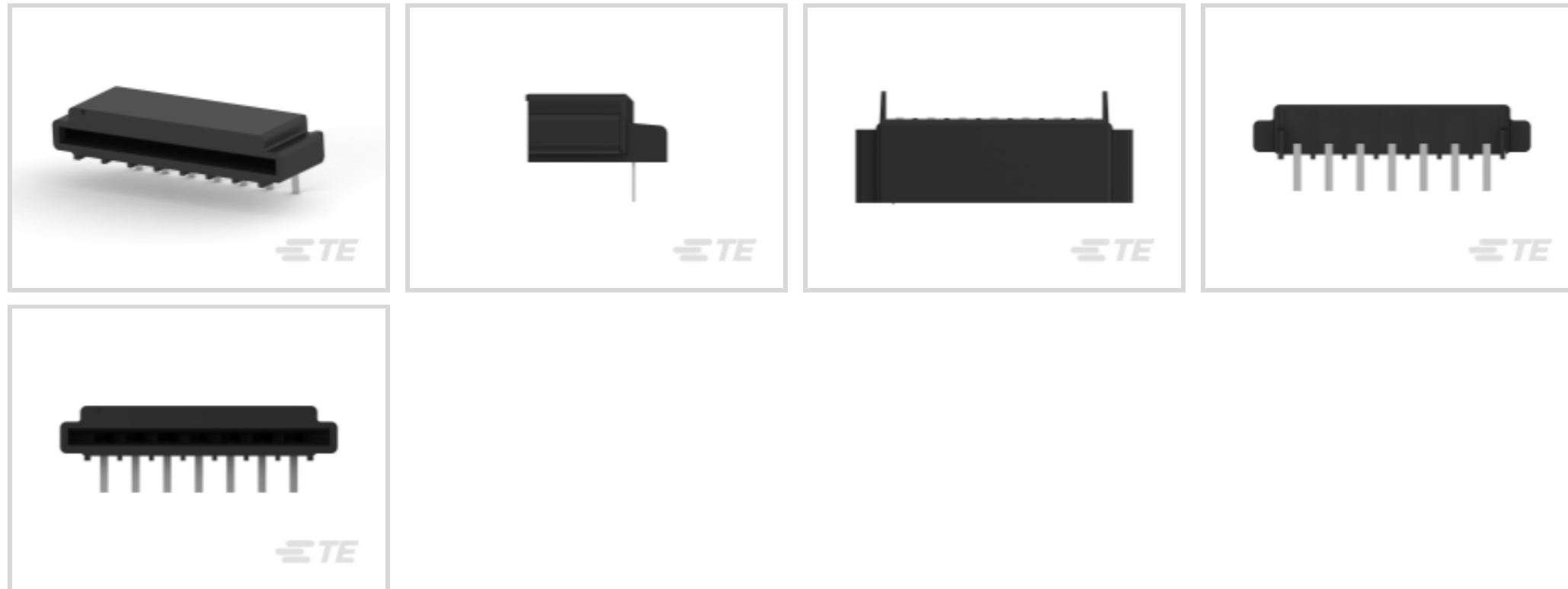
**TRIO-MATE**

TE Internal #: 5-487508-6

Connector Assembly, Wire-to-Board, 7 Position, 2.54 mm [.1 in] Centerline, 1 Row, Right Angle, Socket, Tray, TRIO-MATE, FFC Connectors

[View on TE.com >](#)

Connectors > PCB Connectors > Wire-to-Board Connectors > FFC, FPC & Ribbon Connectors > FFC Connectors



FFC Connector Product Type: **Connector Assembly**

Connector System: **Wire-to-Board**

Number of Positions: 7

Centerline (Pitch): 2.54 mm [.1 in]

Number of Rows: 1

**Features**

**Industry Standards**

UL Flammability Rating	UL 94V-0
------------------------	----------

**Termination Features**

Termination Method to PCB	Through Hole - Solder
Termination Post & Tail Length	3.18 mm [.125 in]

**Dimensions**

PCB Thickness (Recommended)	1.57 mm [.062 in]
-----------------------------	-------------------

**Operation/Application**

Circuit Application	Signal
---------------------	--------

**Mechanical Attachment**

PCB Mount Retention Type	Z Bend
Mating Alignment Type	Polarization
PCB Mount Retention	With
Mating Retention	Without



Mating Alignment	With
Panel Mount Feature	Without
Connector Mounting Type	Board Mount

#### Packaging Features

Packaging Quantity	180
Packaging Method	Tray

#### Contact Features

Contact Mating Area Plating Material	Tin
Contact Base Material	Phosphor Bronze
Contact Mating Area Plating Material Finish	Bright
Contact Mating Area Plating Material Thickness	5 $\mu$ m
Contact Type	Socket
Contact Current Rating (Max)	1 A

#### Housing Features

Housing Material	Thermoplastic
Centerline (Pitch)	2.54 mm [.1 in]
FFC Cable Entry	Right Angle

#### Product Type Features

Connector & Contact Terminates To	Printed Circuit Board
Connector & Housing Type	Receptacle
FFC Connector Product Type	Connector Assembly
Connector System	Wire-to-Board
Insertion Force Type	Low Insertion Force (LIF)

#### Configuration Features

Number of Positions	7
Number of Rows	1
PCB Mount Orientation	Right Angle

#### Body Features

Primary Product Color	Black
-----------------------	-------

#### Usage Conditions

Operating Temperature Range	-55 – 105 °C[-67 – 221 °F]
-----------------------------	----------------------------

#### Other

EU RoHS Compliance	Compliant
EU ELV Compliance	Compliant

## Product Compliance

[For compliance documentation, visit the product page on TE.com>](#)

EU RoHS Directive 2011/65/EU	Compliant
EU ELV Directive 2000/53/EC	Compliant
China RoHS 2 Directive MIIT Order No 32, 2016	No Restricted Materials Above Threshold
EU REACH Regulation (EC) No. 1907/2006	Current ECHA Candidate List: JUNE 2024 (241) Candidate List Declared Against: JUNE 2024 (241) Does not contain REACH SVHC
Halogen Content	Not Low Halogen - contains Br or Cl > 900 ppm.
Solder Process Capability	Wave solder capable to 265°C

### Product Compliance Disclaimer

This information is provided based on reasonable inquiry of our suppliers and represents our current actual knowledge based on the information they provided. This information is subject to change. The part numbers that TE has identified as EU RoHS compliant have a maximum concentration of 0.1% by weight in homogenous materials for lead, hexavalent chromium, mercury, PBB, PBDE, DBP, BBP, DEHP, DIBP, and 0.01% for cadmium, or qualify for an exemption to these limits as defined in the Annexes of Directive 2011/65/EU (RoHS2). Finished electrical and electronic equipment products will be CE marked as required by Directive 2011/65/EU. Components may not be CE marked. Additionally, the part numbers that TE has identified as EU ELV compliant have a maximum concentration of 0.1% by weight in homogenous materials for lead, hexavalent chromium, and mercury, and 0.01% for cadmium, or qualify for an exemption to these limits as defined in the Annexes of Directive 2000/53/EC (ELV). Regarding the REACH Regulation, the information TE provides on SVHC in articles for this part number is based on the latest European Chemicals Agency (ECHA) 'Guidance on requirements for substances in articles' posted at this URL: <https://echa.europa.eu/guidance-documents/guidance-on-reach>

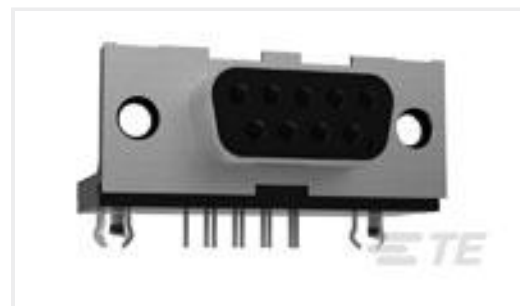
## Also in the Series | **TRIO-MATE**



## Customers Also Bought



TE Part #1623728-1  
BCHE 11 W 100R 5%



TE Part #1-106507-2  
25P.HDP20 REC.ASSY.



TE Part #5-1462037-4  
IM41GR=IM RELAY 100mW 3V BIS



TE Part #3-2176057-1  
RLP73K 3A R18 1% 1K RL



TE Part #4-1625892-9  
3W SM M/OX 5% 3R3



TE Part #826469-3  
2X3P MOD II SHROUDED HEADER, ST



TE Part #1-1734742-0  
.5 FPC VT ZIF Type-A 10 CONT



TE Part #1879337-1  
CPF 0603 2K49 1% 50PPM 1K RL



TE Part #5-827730-0  
50P MOD 2 STIFT LEI



TE Part #5177983-2  
0.8FH,R05H.5,060,08/Sn,TU

## Documents

### Product Drawings

[TRIOMATE ASY H 7P L=3.175,LDFR](#)

English

### CAD Files

[3D PDF](#)

3D

Customer View Model

[ENG\\_CVM\\_CVM\\_5-487508-6\\_F.2d\\_dxf.zip](#)

English

Customer View Model

[ENG\\_CVM\\_CVM\\_5-487508-6\\_F.3d\\_igs.zip](#)

English

Customer View Model

[ENG\\_CVM\\_CVM\\_5-487508-6\\_F.3d\\_stp.zip](#)

English

By downloading the CAD file I accept and agree to the [Terms and Conditions](#) of use.

## Product Specifications



[Trio-Mate Flat Flexible Discrete Circuit .100 Connectors](#)

English

[Application Specification](#)

Japanese

[Application Specification](#)

English