

THIS DRAWING IS UNPUBLISHED. RELEASED FOR PUBLICATION .19

© COPYRIGHT 19 BY AMP INCORPORATED. ALL RIGHTS RESERVED.

LOC	DIST	REVISIONS			
P	LTR	DESCRIPTION	DATE	DWN	APVD
AL	2	A	ES00-0040-01	10JUL2001	JC JP

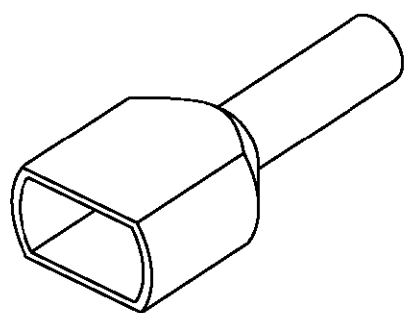
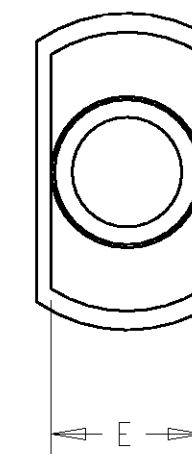
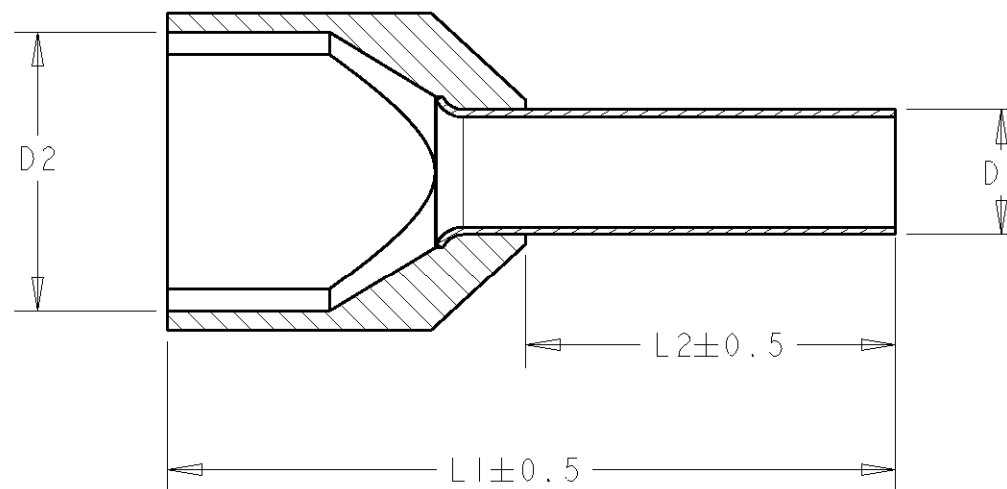
PART NUMBER	SECTION mm ²	L1	L2	D1	D2	E	COLOR	QTY/BAG
737814-1	2x0.75	15.5	8.0	2.1	4.7	2.4	GREY	200
737815-1	2x1.0	16.2	8.0	2.3	5.1	3.0	RED	200
737816-1	2x1.5	16.2	8.0	2.6	6.1	3.2	BLACK	200
737817-1	2x2.5	18.7	10.0	3.2	7.5	3.8	BLUE	100

1. DIMENSIONS BASED ON DIN 46228.4
2. COLOR BASED ON DIN 47002
3. USE HAND TOOL 790081-1 FOR 0.5-4.0 mm².
USE HAND TOOL 790081-2 FOR 6.0-16.0 mm²

1. DIMENSIONES BASADAS EN DIN 46228.4
2. COLOR BASADO EN DIN 47002
3. USAR HERRAMIENTA MANUAL 790081-1 PARA 0.5-4.0mm².
USAR HERRAMIENTA MANUAL 790081-2 PARA 6.0-16.0mm².

△ 4 FINISH FOR METAL SLEEVE: TIN

△ 4 ACABADO PARA EL CASQUILLO METALICO: ESTAÑADO.



SCALE 3:1

<small>THIS DRAWING IS A CONTROLLED DOCUMENT FOR AMP INCORPORATED. IT IS SUBJECT TO CHANGE AND THE CONTROLLING ENGINEERING ORGANIZATION SHOULD BE CONTACTED FOR THE LATEST REVISION.</small>		DWN F. J. CARBONELL 10JUL2001 CHK J. PASCUAL 10JUL2001 APVD -	AMP Tyco Electronics AMP España, S.A. Barcelona, Spain.
DIMENSIONS: mm 	TOLERANCES UNLESS OTHERWISE SPECIFIED: 0 PLC ± 1 PLC ±0.3 2 PLC ± 3 PLC ± 4 PLC ± ANGLES ±	PRODUCT SPEC 108-22049 APPLICATION SPEC - WEIGHT -	NAME TWIN WIRE PIN PUNTERA DOBLE HILO SIZE A3 CAGE CODE 00779 DRAWING NO C-737814
MATERIAL Cu-E PA 6.6	FINISH △ 4	CUSTOMER DRAWING	SCALE 5:1 SHEET 1 OF 1 REV A