

**Operation:** 16PIN-SMT 板上卧式/一体加强型 防水结构 & 2.0 Type-C 连接器

**TID认证 IPX6 防水**

**LTEM NO.:** MC-311FD

(L8.35mm × W10.0mm × H4.65mm CONNECTORS)



邀您使用(微信)小程序  
硕方电子开关&连接器选型手册  
手机扫码即可进入...



Technical parameter

表面贴装

侧向导入 LATERAL

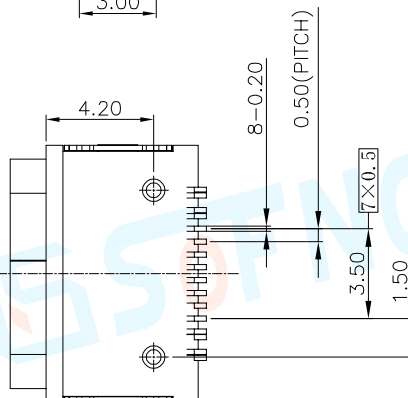
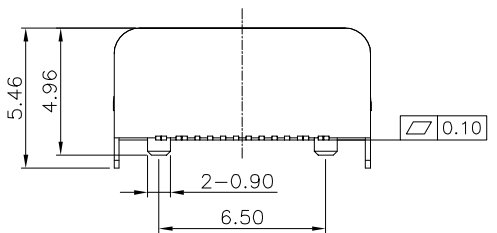
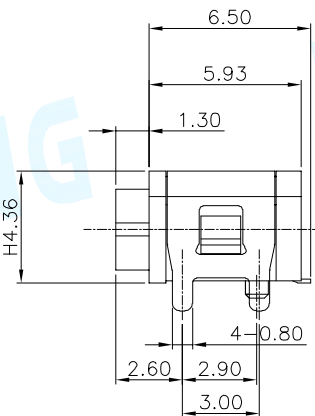
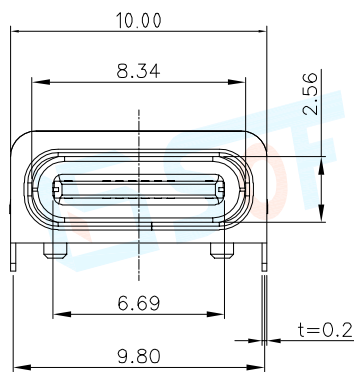
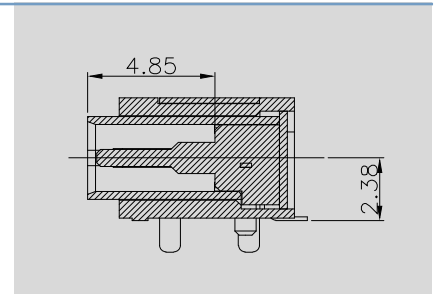
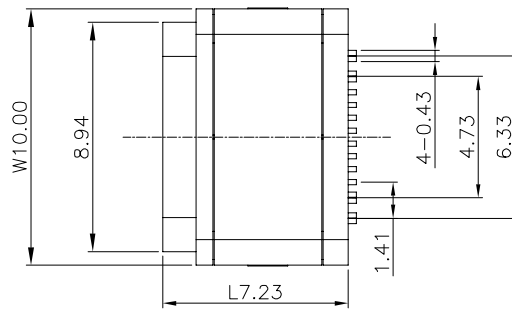
精密部品 NICETY

可靠 STABILIZE

适合环保 RoHS

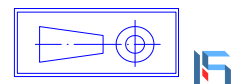
PROJECT	LEVEL	A[better product]	B[average product]
	Contact Rating	5.0A, 12V DC	
Electrical Properties	Initial Contact Resistance	30mΩ max.	50mΩ max.
	Insulation Resistance	100MΩ min.500V DC	Skey/PD: 100MΩ min.300V DC
	Withstand Voltage	500V AC for 1 minute	350 V AC for 1 minut
Durable Performance	There No Load	10,000 Cycles	8,000 Cycles
	Rated Load	8,500 Cycles	6,500 Cycles
	Storage temp.	-35℃~+75℃(Operating Temp: )	

Unit:mm



**Material declaration**

No.	NAME	MATERIAL	DESCRIPTION
Ⓐ	TERMINAL 接触端子	COPPER ALLOY 【G/F】	2.0 μm Ni PLATED OVERALL 0.25 μm Au PLATED CONTACT AREA GOLD FLASH ON SOLDER AREA
Ⓑ	HOUSING 基座	THERMOPLASTIC	UL 94V-0,COLOR:BLACK;
Ⓒ	SHIELDING PLATE 屏蔽壳	STAINLESS STEE	【G/F】0.25 μm Ni PLATED OVERALL;
Ⓓ	SHELL 外壳	STAINLESS STEE	【G/F】0.25 μm Ni PLATED OVERALL;
Ⓔ	GND RING 接地件	STAINLESS STEE	STAINLESS STEEL;
Ⓕ	GLUE WATER 低温胶水	-	EPOXY[Black]



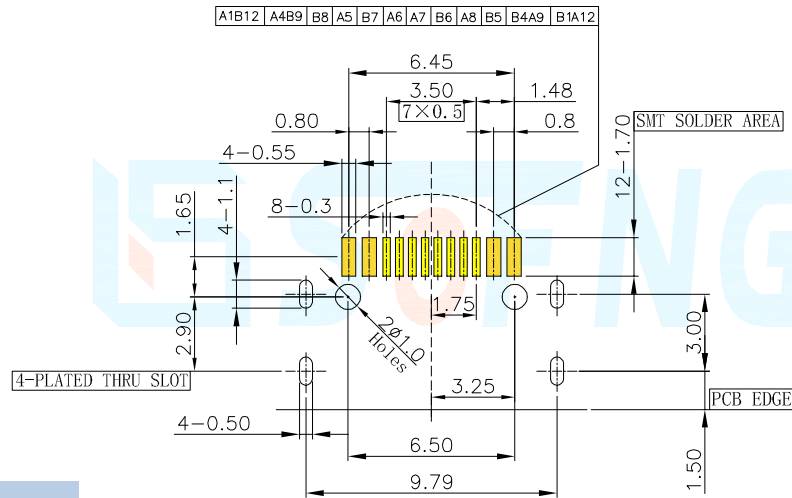
Operating Force

Inward  
Exiting

5.0~12.0N. (1N.=100gram-force)  
5.0~12.0N. (1N.=100gram-force)

Solder-ability (Max.)

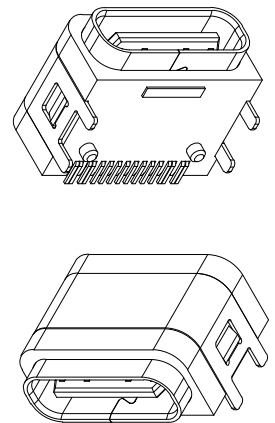
IR Reflow:255°C, 5sec. Manual:350°C, 3sec.



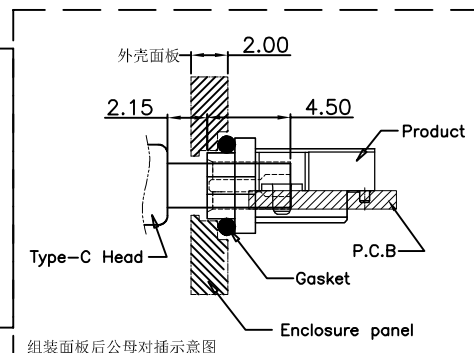
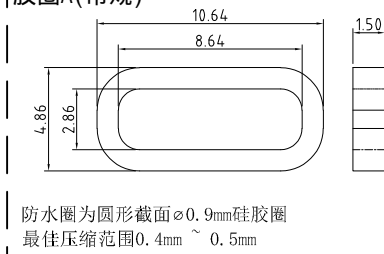
DECIMALS	ANGLES
.X :±0.20	X.° :±1.5°
.XX :±0.10	X.X° :±1.0°
.XXX :±0.05	.XXX° :±0.5°

Pin Definition

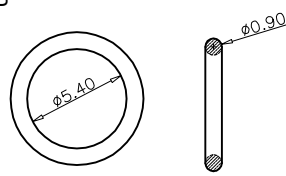
PIN	Signal NAME	Description	PIN	Signal NAME	Description
A 1	C1	GND	B12	C1	GND
A 4	C2	V BUS	B 9	C2	V BUS
A 5	C4	CC1	B 8	C3	SBU2
A 6	C6	Dp1	B 7	C5	Dn2
A 7	C7	Dn1	B 6	C8	Dp2
A 8	C9	SBU1	B 5	C10	CC2
A 9	C11	V BUS	B 4	C11	V BUS
A12	C12	GND	B 1	C12	GND



胶圈A(常规)



胶圈B



注記 NOTICE

1. 碩方公司擁有最終解釋權; The company reserves the right of final interpretation;
2. 文件禁止外洩、轉載; Leaked and reproduced prohibited;
3. 未經授權修改無效。Modify is invalid.

本品不屬於危害性廢棄物,須丟棄時可以委託回收商予以回收再生處理。  
Products do not belong to •

運送時本產品不要直接與水、酸鹼性化學物質接觸,或放置於含有以上氣體環境中,並且需要注意會有滑落、側翻的危險發生; 運輸過程中不能有碰撞或者擠壓,須保證溫度與濕度適中 [常溫 25°C,濕度在 50°C 以內],不可導致材料變形或氧化。