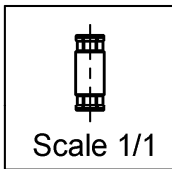
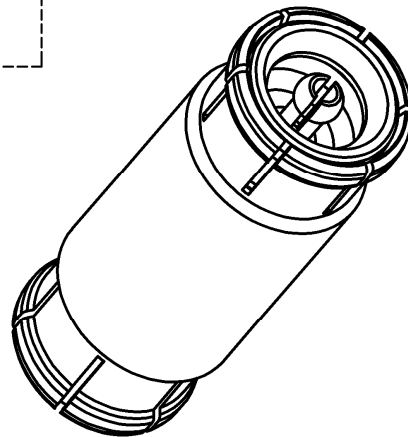
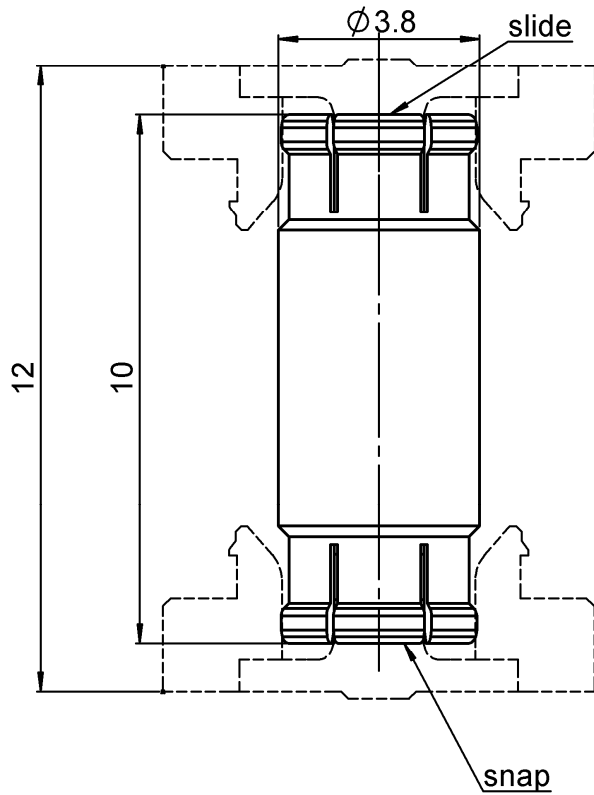


**MALE-MALE ADAPTER SLIDE-SNAP TYPE**

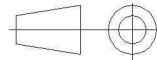
**R223.703.170**

**BOARD TO BOARD 12MM**

Series : MMBX



All dimensions are in mm.



COMPONENTS	MATERIALS	PLATING (µm)
BODY	BERYLLIUM COPPER	NPGR
CENTER CONTACT	BERYLLIUM COPPER	NPGR
OUTER CONTACT		
INSULATOR	PTFE	
GASKET		
OTHERS PARTS		
-	-	-
-	-	-

Issue : 1239 A

In the effort to improve our products, we reserve the right to make changes judged to be necessary.



**MALE-MALE ADAPTER SLIDE-SNAP TYPE**

**R223.703.170**

**BOARD TO BOARD 12MM**

Series : MMBX

**PACKAGING**

**SPECIFICATION**

Standard	Unit	Other
<b>100</b>	-	<b>Contact us</b>

**ELECTRICAL CHARACTERISTICS**

**ENVIRONMENTAL**

Impedance **50** Ω  
 Frequency **0-12.4** GHz  
 VSWR **1.25\*** + **0,0000** x F(GHz) Maxi  
 Insertion loss **0.05\*** √F(GHz) dB Maxi  
 RF leakage - (**100\*\*** - F(GHz)) dB Maxi  
 Voltage rating **330** Veff Maxi  
 Dielectric withstanding voltage **500** Veff mini  
 Insulation resistance **1000** MΩ mini

Operating temperature **-55~+155** ° C  
 Hermetic seal **NA** Atm.cm3/s  
 Panel leakage **NA**

**OTHER CHARACTERISTICS**

Assembly instruction **NA**

Others :  
 \* to 6 GHz  
 \*\* Interface MMBX only up to 2.5 GHz  
 PCB to PCB is -50 dB up to 2.5 GHz

**MECHANICAL CHARACTERISTICS**

Center contact retention  
 Axial force – Mating end **10** N mini  
 Axial force – Opposite end **10** N mini  
 Torque **NA** N.cm mini  
  
 Recommended torque  
 Mating **NA** N.cm  
 Panel nut **NA** N.cm  
  
 Mating life **100** Cycles mini  
 Weight **0,3850** g

Issue : 1239 A

In the effort to improve our products, we reserve the right to make changes judged to be necessary.

