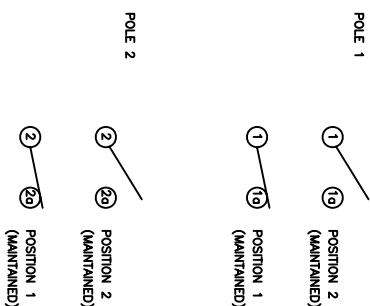


**SCHEMATIC**



**SPECIFICATIONS**

FUNCTION:  
 Pole 1: Off-On  
 Pole 2: Off-On

RATINGS:  
 10A 125VAC [3.0U<sub>0</sub>]  
 6(2)A 250V~ 1125 1E4 [0E]

CONTACT RESISTANCE:  
 Inhibit: 35mΩ at 50VAC Min.

INSULATION RESISTANCE:  
 100MΩ at 500VDC Min.

DIELECTRIC STRENGTH:  
 1500VAC For 1 Minute

ELECTRICAL LIFE:  
 10,000 Cycles Min.

TEMPERATURE:  
 Operating: -20°C to 105°C [UL, cUL]  
 -20°C to 125°C [0E]

APPROVALS:

**MATERIALS**

BODY:  
 Polyamide 6/6 (PA66), UL94 V-2

ACTUATOR:  
 Polyamide 6/6 (PA66), UL94 V-2

LAMP LENS:  
 N/A

LAMP:  
 N/A

SPRING:  
 Steel

BALL:  
 Steel

MOBILE CONTACT:  
 Silver Plated Copper

CONTACTS:  
 Silver Plated Copper

TERMINALS:  
 Silver Plated Copper

**COLORS AND MARKINGS**

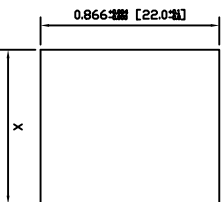
BODY:  
 Black

ACTUATOR/LENS:  
 Pole 1: Black  
 Pole 2: Black

MARKINGS:  
 Pole 1: /O Vertical  
 Pole 2: /O Vertical

MARKING COLOR:  
 Pole 1: White  
 Pole 2: White

**SUGGESTED PANEL CUTOUT**



PANEL THICKNESS	X
0.030~0.049 [0.75~1.25]	0.756 [19.2]
0.049~0.079 [1.25~2.00]	0.764 [19.4]
0.079~0.118 [2.00~3.00]	0.772 [19.6]

REVISION	REV.	DATE	BY
1			

THE INFORMATION CONTAINED IN THIS DOCUMENT IS PROPRIETARY TO E-SWITCH-LAMB

INDUSTRIES AND IS NOT TO BE COPIED OR TRANSMITTED

NEW RELEASE DESCRIPTION

2012 08/22/12

2012 08/22/12

2012 08/22/12

SCALE

DRAWING NOT TO SCALE

PROJECTION

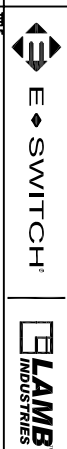
38-RA22131121

DATE

AUG 22, 2012

REVISION

A



RA22131121

DATE

AUG 22, 2012

REVISION

A